

Bilgiden Teknolojiye  
knowledge to technology

# HORIZON 2020 Hakemlik Kaydı



horizon 2020 sign up - Go x

https://www.google.com.tr/webhp?sourceid=chrome-instant&rlz=1C1CAFA\_enTR603TR603&ion=1&espv=2&ie=

Google horizon 2020 sign up

Web Haberler Görseller Videolar Daha fazla ▾ Arama araçları

Yaklaşık 2.290.000 sonuç bulundu (0,38 saniye)

Home - Research Participant Portal - European Commission  
ec.europa.eu/research/participants/portal/ ▾ Bu sayfanın çevirisini yap  
2014-2020 Horizon 2020 - research and innovation framework programme; 2007-2013  
7th research ... Iceland and Norway sign up to join Horizon 2020.More.  
Calls - Opportunities - Organisation Search - FP7 - CIP

Horizon 2020 - European Commission  
ec.europa.eu/programmes/horizon2020/ ▾ Bu sayfanın çevirisini yap  
Login - Create an ECAS account ... European Commission - Horizon 2020 ...  
IMPRINTS project allowed the research team to integrate in an Early Warning ...  
What is Horizon 2020? - Find Your area - Horizon 2020 Programme - Project Stories

Experts - Research Participant Portal - European Commission  
ec.europa.eu/research/participants/.../experts/ ▾ Bu sayfanın çevirisini yap  
... 2020 proposals. Don't forget to tick the H2020 box in the registration platform and  
update your expertise. ... This includes the Horizon 2020 Advisory Groups.

Experts - European Commission  
ec.europa.eu/programmes/horizon2020/.../exp... ▾ Bu sayfanın çevirisini yap  
Login - Create an ECAS account ... have a high-level of expertise in the relevant fields  
of research and innovation; can be ... Details of the Horizon 2020 advisory groups are  
available in the European Commission's Register of Expert Groups.

Horizon 2020 - Vision2020: The Horizon Network  
www.2020visionnetwork.eu/horizon2020/ ▾ Bu sayfanın çevirisini yap

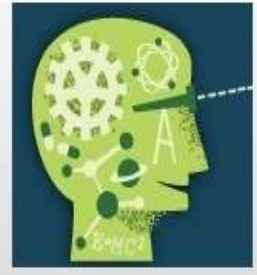
- ➔ Hakemlik kaydı yapılacak web adresini bulmak için Google da “Horizon 2020 sign up” yazılır ve “Research Participant Portal” yazılı link tıklanır.

### News

H2020 call for expression for interest for experts (11/2013)  
New calls for expression of interest for individual experts and for organisations to suggest experts were just published in OJ C342 of 22 November 2013. European Commission will soon need experts to evaluate first Horizon 2020 proposals. Don't forget to tick the H2020 box in the registration platform and update your expertise.

### Quick Links

- [FAQ for Experts](#)
  - [Expert recommendations](#)
- ### Logistics for Brussels
- [Map of evaluation area](#)
  - [Info on hotels](#)
  - [Metro map](#)
  - [From airport to Brussels](#)



## Experts

H2020 ONLINE MANUAL

Join the database of independent experts for European research and innovation.

The European Commission appoints independent experts to assist with research and innovation assignments including the evaluation of proposals, monitoring of projects, and evaluation of programmes, and design of policy.

### New experts

#### Who can be an expert?

You have a chance of being selected as an expert if you:

- have high-level of expertise in the relevant fields of research and innovation (see call for details on types of expertise).
- can be available for occasional, short-term assignments

REGISTER AS EXPERT



#### What do expert assignments involve?

Experts, as peer reviewers, assist in the:

- **evaluation** of proposals
- **monitoring** of actions

In addition, experts assist in the :

- **preparation, implementation or evaluation of programmes** and **design of policies**. This includes the Horizon 2020 Advisory Groups.

Assignments mainly concern research and innovation, falling within the Horizon 2020 programme designed to address the challenges Europe is facing through funding excellent science, technology and innovation.

Take a look at the most recently funded projects.

In order to access the expert registration form, you are first asked to login with a valid Participant Portal (ECAS) account. If you do not have it yet, it easy to **create your Portal (ECAS) account.**

➔ Expert linkine tıklandığında ilk olarak Portal (ECAS) hesabının oluşturulması talep edilir.

Where are you from? x

https://ecas.eceuropa.eu/cas/way?loginRequestId=ECAS\_LR-2051007-JtjV8W2zxDPafnrSq9y1vWY10uEZ5G38l4KzuFlqmGRAnNHEBhkQF7OVUjTH7tPHQKSWSbJyUk9

(ECAS)

European Commission External


EUROPA > Authentication Service > Where Are You From?

## Where are you from?


Welcome to the European Commission Authentication Service (ECAS).

Choose the institution or body for which you want to log in. Choose "External" if you don't work for a European institution or body. Choose "W+7" if you have a special external account composed of w and 7 digits.


If you aren't sure, select the "I don't know?" option for help.




European Commission  
European Commission, Executive Agencies.



External  
Partners, Researchers, Citizens.



W+7  
I have an account w + 7 digits.  
Special external accounts.



I don't know?  
More information about this screen.

show all Institutions Regulatory Agencies Joint Undertakings Other

- Domain olarak 'External' seçilmelidir.

Windows taskbar with icons for HP, Chrome, Word, PowerPoint, and system tray showing 09:26 5.9.2014.

## Sign Up

[Help for external users](#)

Choose a username

First name \*

Last name \*

E-mail \*

Confirm e-mail \*

E-mail language \*



Enter the code \*

Privacy statement: by checking this box, you acknowledge that you have read and understood the [privacy statement](#) \*

**Sign up**

\* Required fields

- Bu sayfada;
- Bir kullanıcı adı seçilir
- Ad ve soyad yazılır
- Email adresi (iki kere yazılır)
- Emailde kullanılacak dil İngilizce seçilir
- Güvenlik kodu girilir
- Gizlilik beyanı işaretlenir

ve giriş tamamlanır.

# Şifre Oluşturma

- Bu aşamadan sonra email adresinize bir link gelir. Linki tıkladıktan sonra açılan sayfada şifre oluşturulması istenir.
- Şifre rakam, harf ve noktalama işaretlerinden oluşmalı ve en az 10 karakter olmalıdır.

Home - Research Participi... x  
ec.europa.eu/research/participants/portal/desktop/en/home.html

(A-Z) Sitemap About this site Contact Legal Notice Search English

RESEARCH & INNOVATION  
Participant Portal

European Commission

European Commission > Research & Innovation > Participant Portal > Home

HOME FUNDING OPPORTUNITIES HOW TO PARTICIPATE EXPERTS SUPPORT Search PP LOGIN REGISTER

Horizon 2020 Funding  
Starting from 1/1/2014

On this site you can find and secure **funding** for projects under the following EU programmes:

- 2014-2020 Horizon 2020 - research and innovation framework programme
- 2007-2013 7th research framework programme (FP7) and Competitiveness & Innovation Programme (CIP)
- Research Fund for Coal & Steel, COSME, 3rd Health Programme, Consumer Programme

► Oluşturulan kullanıcı adı ve şifreyle birlikte artık hakemlik kaydının yapıldığı Participant Portal'a giriş yapılabilir.

EUROPEAN COMMISSION AUTHENTICATION SERVICE (ECAS)  
External

EUROPA > Authentication Service > Login

Login New password Sign Up Help

ECAS  
(authenticates your identity on European Commission websites)  
Participants Portal requires you to authenticate

Login Not registered yet

Is the selected domain correct?  
External Change it

Username or e-mail address  
Password

More options...

Login! Lost your password?

\* Required fields

Or log in with your

ec.europa.eu/research/pai x Experts - European Comrn x National Contact Points x Account information x

https://ec.europa.eu/research/participants/api/authentication/termsandconditions.html?from=http://ec.europa.eu/research/participants/portal/desktop/en/e

RESEARCH & INNOVATION  
Participant Portal  
European Commission

European Commission > Research & Innovation > Home >

### TERMS AND CONDITIONS OF USE OF THE ELECTRONIC EXCHANGE SYSTEM

**1. SUBJECT MATTER AND SCOPE**

**1.1.** The European Commission provides the electronic exchange system (EES) in the 'My Area' section of the [Participant Portal](#) for:

- **applicants, beneficiaries, candidates and winners managing EU grants and prizes** in EU funding programmes;
- **external experts**, in the context of EU funding programmes.

It allows beneficiaries to:

- register in the ['Beneficiary Register'](#) and view and edit their data;
- create, revise and submit proposals;
- prepare grants, sign grant agreements and submit deliverables, reports and payment requests during the implementation of their action.

It allows experts to create or update their profile, manage their expert contract and submit supporting documents and payment requests.

**1.2.** These Terms and Conditions govern the relation between:

- the European Commission and its Executive Agencies and funding bodies using the EES (collectively 'the European Commission'); and
- beneficiaries, experts and users

in relation to their access to and use of the EES.

For the avoidance of doubt, the award of grants, prizes and expert contracts shall not be governed by these Terms and Conditions.

**1.3.** Requesting access to the EES, accessing the EES or using the EES signifies unconditional acceptance of these Terms and Conditions (in the then-current version).

I, Hayrullah Korkmaz agree with the Terms and Conditions of use.

I AGREE I REFUSE

Windows taskbar: 17:41, 22.8.2014

- ➔ Giriş yapıldıktan sonra açılan pencerede sistemin kullanım koşul ve şartlarına uyulacağını ifade eden metin işaretlenir.
- ➔ 'I Agree' butonu tıklanır ve devam edilir.



ec.europa.eu/research/pa... Experts - European Comm... Experts - Research Particip... Account information x

https://ec.europa.eu/research/participants/portal/desktop/en/experts/index.html

European Commission Participant Portal

European Commission > Research & Innovation > Participant Portal > Experts

MY AREA HOME FUNDING OPPORTUNITIES HOW TO PARTICIPATE EXPERTS SUPPORT Search PP HAYRULLAH KORKMAZ

My Organisation(s)  
My Proposal(s)  
My Project(s)  
My Notification(s)  
My Expert Area

News

H2020 call for expression for interest for experts (11/2013)  
New calls for expression of interest for [individual experts](#) and for [organisations to suggest experts](#) were just published in [OJ C342 of 22 November 2013](#). European Commission will soon need experts to evaluate first Horizon 2020 proposals. Don't forget to tick the H2020 box in the registration platform and update your expertise.

Quick Links

- FAQ for Experts
- EMEX
- Expert recommendations

Experts H2020 ONLINE MANUAL

Join the database of independent experts for European research and innovation.

The European Commission appoints independent experts to assist with research and innovation assignments including the evaluation of proposals, monitoring of projects, and evaluation of programmes, and design of policy.

New experts

**Who can be an expert?**

You have a chance of being selected as an expert if you:

- have high-level of expertise in the relevant fields of research and innovation (see call for details on types of expertise),
- can be available for occasional, short-term assignments

**What do expert assignments involve?**

Experts, as peer reviewers, assist in the:

- evaluation of proposals
- monitoring of actions

In addition, experts assist in the:

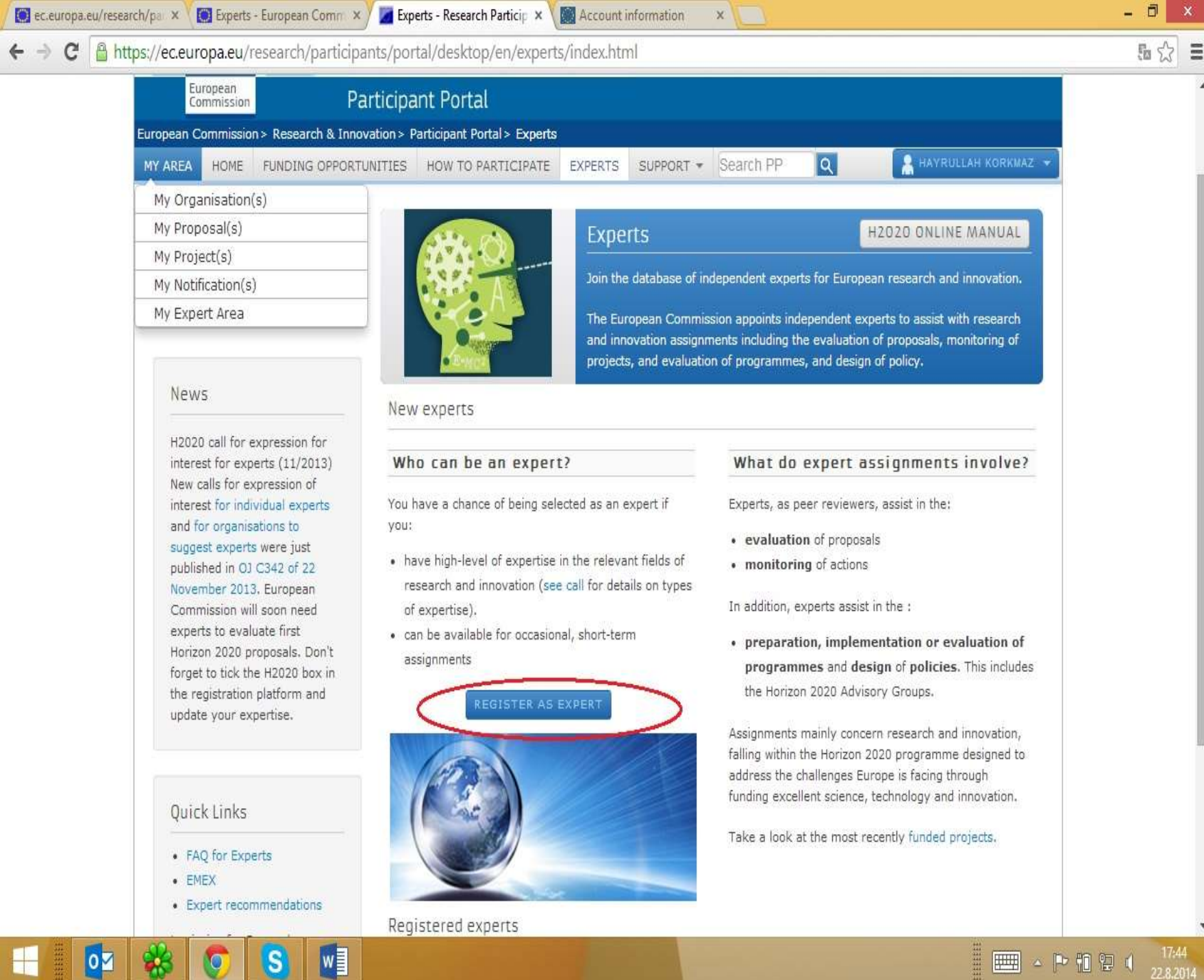
- preparation, implementation or evaluation of programmes and design of policies. This includes the Horizon 2020 Advisory Groups.

Assignments mainly concern research and innovation, falling within the Horizon 2020 programme designed to address the challenges Europe is facing through funding excellent science, technology and innovation.

Take a look at the most recently funded projects.

REGISTER AS EXPERT

Registered experts



➤ Artık Expert(hakem-izleyici) olarak kayıt yapılabilir.

➤ 'REGISTER AS EXPERT' butonu tıklanır.



## RESEARCH & INNOVATION

### Participant Portal - Expert Area

LOGOUT

European Commission > Research > Participant Portal

PROGRAMME  
selection

PERSONAL  
details

LANGUAGES

EDUCATION

AREA  
of expertise

PROFESSIONAL  
experience

Welcome

Candidature number  
EX2014D212115

1/6 Status Invalid  
See details

Programme Selection

Personal Details

Languages

Education

Area of Expertise

Professional Experience

Questions?

FAQ



contact



Expert Area'da profilin oluşturulması;

- Program seçimi,
- Kişisel detaylar,
- Dil,
- Eğitim,
- Uzmanlık alanı
- Profesyonel tecrübe

başlıklı 6 sekmenin ayrı ayrı tamamlanmasıyla gerçekleşir

## Programme Selection

Personal Details

Languages

Education

Area of Expertise

Professional Experience

## Questions?

FAQ



contact



For each of its programmes, the Commission and its agencies published calls for expression of interest for experts (call texts accessible by clicking on programmes below).

Tasks consist of assisting in the:

- Evaluation of proposals;
- Monitoring of actions;
- Preparation, implementation or evaluation of programmes and design of policies.

By selecting any of the programmes below:

- you certify that the information provided in your application is true
- you agree to the terms of the [privacy statement](#)
- you agree to accept using the electronic exchange systems for interactions with the European Commission or relevant funding body<sup>?</sup>
- if contracted as an expert, you accept that the European Commission or relevant funding body publish your name and area of expertise on their respective websites

Please indicate the programmes for which you wish to be considered for selection as an expert

Horizon 2020

COSME (Competitiveness for Small and Medium-sized Enterprises) programme

[Education, Audiovisual and Culture Executive Agency \(EACEA\) programmes](#)

CEF (Connecting Europe Facility)

Other funding programmes

Save and continue >>

- İlk sekme olan program seçiminde Horizon 2020 seçilir.
- Daha sonra kişiye ait verilerin Avrupa Komisyonu ile ilişkili kurumlarla paylaşılıp paylaşılmayacağına dair evet veya hayır seçeneği tıklanır 'save and continue' butonu tıklanarak devam edilir.

➔ İkinci sekme olan kişisel detaylarda isim, cinsiyet, doğum tarihi, uyruk ve adres bilgileri doldurularak 'save and continue' tıklanarak devam edilir.

Welcome

Candidature number  
EX2014D212115

1/6 Status Invalid  
See details

Programme Selection

**Personal Details**

Languages

Education

Area of Expertise

Professional Experience

Questions?

FAQ

contact

## Personal Details

Let us know who you are.

**i** We respect your privacy. You can consult our privacy statement [here](#)

Title	Mr. ▾
First name	<input type="text"/>
Family name	<input type="text"/>
Gender	<input type="radio"/> Male <input type="radio"/> Female
Date of birth (dd/mm/yyyy)	<input type="text"/>
Nationality	Select ... ▾
Second nationality (if applicable)	Select ... ▾

## Contact Details

Let us know how to contact you and where to send any documentation

**i** e-mail is the main form of communication, although we may need to get in touch by other means.

e-mail address   
If you want to change this email, please update your ECAS account.

Street name and number

Town/City

Country

Post code

Phone number 1  
(+32123456789)

Phone number 2  
(optional)

Professional Experience

## Questions?

FAQ   contact

Save and continue >>

European  
Commission

## RESEARCH &amp; INNOVATION

## Participant Portal - Expert Area

LOGOUT

European Commission &gt; Research &gt; Participant Portal

PROGRAMME selection ✓ PERSONAL details ✓ **LANGUAGES** ✗ EDUCATION ✓ AREA of expertise ✓ PROFESSIONAL experience ✓

Welcome H GUMUS

Candidature number  
EX2014D2121152/6 Status Invalid  
See details ?Programme Selection ✓Personal Details ✓**Languages** ✗Education ✗Area of Expertise ✗Professional Experience ✗

## Questions?

FAQ



contact



print profile

user manual

## Languages

Please indicate your mother tongue and any other languages you speak.

**i** English is usually the common language for evaluations and reviews.

Language	Turkish ▼
Writing	Mother Tongue ▼
Reading	Mother Tongue ▼
Conversation	Mother Tongue ▼

&lt;&lt; Back

Back to list

Save

- ➔ Dil sekmesinde ilk olarak anadil Türkçe eklenir ve kaydedilir.



## RESEARCH &amp; INNOVATION

## Participant Portal - Expert Area

LOGOUT

European Commission &gt; Research &gt; Participant Portal

PROGRAMME selection ✓ PERSONAL details ✓ LANGUAGES EDUCATION PROFESSIONAL experience ✓

Welcome H GUMUS  
Candidature number EX2014D212115  
3/6 Status Invalid See details ?

Programme Selection ✓  
Personal Details ✓  
Languages  
Education  
Area of Expertise  
Professional Experience

Questions?  
FAQ ? contact ?

print profile user manual

## Languages

Please indicate your mother tongue and any other languages you speak.

English is usually the common language for evaluations and reviews.

	Language	Writing	Reading	Conversation		
Language 1	Turkish	Mother Tongue	Mother Tongue	Mother Tongue	✓	✗

<< Back Add new language Continue >>

- Türkçe kaydedildikten sonra 'Add new language' butonu tıklanarak yeni bir dil eklenir.
- İngilizcenin projeleri değerlendirmede ortak dil olarak kullanıldığı unutulmamalıdır.

European  
Commission

## RESEARCH &amp; INNOVATION

Participant Portal - Expert Area

LOGOUT

European Commission &gt; Research &gt; Participant Portal

PROGRAMME selection  PERSONAL details  LANGUAGES  EDUCATION  AREA of expertise  PROFESSIONAL experience

Welcome H GUMUS

Candidature number  
EX2014D2121153/6 Status Invalid  
See details

Programme Selection   
Personal Details   
Languages   
Education   
Area of Expertise   
Professional Experience

## Questions?

FAQ  contact print profile  user manual 

## Languages

Please indicate your mother tongue and any other languages you speak.

**i** English is usually the common language for evaluations and reviews.

	Language	Writing	Reading	Conversation		
Language 1	Turkish	Mother Tongue	Mother Tongue	Mother Tongue	<input checked="" type="checkbox"/>	<input type="checkbox"/>
Language 2	English	Fluent	Fluent	Fluent	<input checked="" type="checkbox"/>	<input type="checkbox"/>

<< Back Add new language Continue >>

- İngilizce seçilip seviyesi belirlendikten sonra eklenecek başka bir dil yoksa 'Continue' tıklanarak devam edilir.

European  
Commission

## RESEARCH &amp; INNOVATION

Participant Portal - Expert Area

LOGOUT

European Commission &gt; Research &gt; Participant Portal

PROGRAMME selection PERSONAL details LANGUAGES EDUCATION AREA of expertise PROFESSIONAL experience

Welcome H GUMUS

Candidature number  
EX2014D2121153/6 Status Invalid  
See details

Programme Selection

Personal Details

Languages

Education

Area of Expertise

Professional Experience

## Education

Please tell us about your university qualifications

Special interest in post-graduate degrees such as PhDs and Masters

Title of qualification	Master
Subject or field	Education
Name of institution	Hawaii Pacific University
Country	United States
Year awarded (yyyy)	2012

Back to list

Save

- Eğitim sekmesinde sahip olunan her bir mezuniyet için giriş yapılır. Mezuniyetin seviyesi (lisan, yüksek lisans,....) seçilip mezunun olunan kurum ve mezuniyet yılı girilerek kayıt yapılır.



European  
Commission

## RESEARCH &amp; INNOVATION

## Participant Portal - Expert Area

LOGOUT

European Commission &gt; Research &gt; Participant Portal

PROGRAMME selection PERSONAL details LANGUAGES EDUCATION AREA of expertise PROFESSIONAL experience



Welcome H GUMUS

Candidature number  
EX2014D2121154/6 Status: Invalid  
See details

Diploma for GUMUS Hulya added successfully

## Education

Please tell us about your university qualifications

Special interest in post-graduate degrees such as PhDs and Masters

Title of qualification	Subject or field	Name of institution	Country	Year of qualification		
Master	Education	Hawaii Pacific University	US	2012		

&lt;&lt; Back Add new qualification Continue &gt;&gt;

- ➔ Diğer mezuniyetleri girmek için 'add new qualification' butonu tıklanır ve diğer mezuniyetlerin kaydı da aynı şekilde yapılır.

Welcome H GUMUS

Candidature number  
EX2014D212115

4/6 Status Invalid  
See details

- Programme Selection
- Personal Details
- Languages
- Education
- Area of Expertise
- Professional Experience

Questions?  
FAQ contact

## Area of Expertise

Please tell us about your field of expertise using the interactive navigation trees provided and finally in your own words.

- A Specialist Field(s)
- B Pre-defined Themes
- C Open Keywords

### My Specialist Field(s)

Please let us know your specialist field(s) using the interactive tree accessible below.

Please select at least one specialist field per programme

Knowing your field of expertise helps us to match your profile to relevant assignments.

You have no fields selected yet.

<< Back Update specialist fields Continue >>

- Uzmanlık alanı sekmesinde tamamlanması gereken üç ayrı sekme vardır. Bunlardan birincisi 'Specialist Field(s)' dir.
- 'Update specialist' butonu tıklanarak uzmanlık alanı seçilir.

### Selected specialist field(s)

Identify your specialist field(s) directly in the interactive tree or use the search box. For Horizon 2020, note that it is only possible to select your specialist field(s) at a certain level or below e.g. Science/Natural Sciences/Mathematics/Pure mathematics, Applied mathematics.

Cancel

Save

Search

- ▶ Business and Innovation
- ▼ Science
  - ▶ NATURAL SCIENCES
  - ▶ ENGINEERING AND TECHNOLOGY
  - ▶ MEDICAL AND HEALTH SCIENCES
  - ▶ AGRICULTURAL SCIENCES
  - ▶ SOCIAL SCIENCES
    - ▶ Psychology
    - ▶ Economics and Business
    - ▶ Educational sciences
      - ▶ Education, general (including training, pedagogy, didactics)
      - Education, special (to gifted persons, those with learning disabilities)
    - ▶ Sociology
    - ▶ Law
    - ▶ Political science
    - ▶ Social and economic geography
    - ▶ Media and communications
    - ▶ Other social sciences
- ▶ HUMANITIES

- ▶ Uzmanlık alanı spesifik olarak seçilir.
- ▶ Seçilen uzmanlık alanları hangi alanlarda ki projelere hakemlik yapılacağını belirler.

Welcome H GUMUS

Candidature number: EX2014D212115

4/6 Status Invalid See details

Programme Selection ✓

Personal Details ✓

Languages ✓

Education ✓

Area of Expertise **✕**

Professional Experience ✕

Questions?

FAQ  contact 

Saved successfully

## Area of Expertise


Please tell us about your field of expertise using the interactive navigation trees provided and finally in your own words.

A Specialist Field(s) B Pre-defined Themes C Open Keywords

### My Specialist Field(s)

Please let us know your specialist field(s) using the interactive tree accessible below.

**Please select at least one specialist field per programme**

 Knowing your field of expertise helps us to match your profile to relevant assignments.

1. H2020->Science->SOCIAL SCIENCES->Educational sciences ->  
Education, general (including training, pedagogy, didactics)

<< Back Update specialist fields Continue >>

- ➔ Eklenecek her bir sipesifik uzmanlık için 'update specialist fields' butonu tıklanarak yeni uzmanlık alanı seçilir.
- ➔ Tamamlandığında 'continue' butonu tıklanarak devam edilir.

## Area of Expertise

Please tell us about your field of expertise using the interactive navigation trees provided and finally in your own words.

**A** Specialist Field(s) **B** Pre-defined Themes **C** Open Keywords

### My pre-defined themes

Let us know which pre-defined themes best describe your expertise. Please select **at least 2 themes per programme**.

**i** The pre-defined list presents the thematic domains for European funding under its programmes

1. Horizon 2020 ->Horizon 2020 areas->Marie-Sklodowska-Curie Actions
2. Horizon 2020 ->Horizon 2020 areas->Science with and for Society
3. Horizon 2020 ->Horizon 2020 cross-cutting issues->International cooperation in science and technology
4. Horizon 2020 ->Horizon 2020 cross-cutting issues->Responsible research and innovation, including public engagement, science education
5. Horizon 2020 ->Horizon 2020 cross-cutting issues->Programme monitoring and evaluation

Update themes

- Uzmanlık Alanının ikinci sekmesi ‘Pre-defined Themes’ dir
- “Areas of Expertise” kısmında “Specialist Fields” ile çalışma alanları belirtildikten sonra seçim şansının artırılması için, “Pre-Defined Themes” kısmında “H2020 Areas” alt bileşeninde ilgilenilen H2020 alt alanları ve H2020 programına ilişkin yatay konulara (H2020 cross-cutting issues) dair seçim yapılır.
- Seçimler ‘Update themes’ butonuna tıklanarak yapılır.

Programme Selection Personal Details Languages Education **Area of Expertise** Professional Experience 

## Questions?


FAQ contact 

## Area of Expertise

Please tell us about your field of expertise using the interactive navigation trees provided and finally in your own words.

**A** Specialist Field(s) **B** Pre-defined Themes **C** Open Keywords

## My open keywords

Please describe your expertise **using at least 3 keywords or phrases**. Type a single keyword or phrase into the field provided and click the **Add keyword/phrase** button. Repeat to add another keyword. To complete our view of your area of expertise, describe your specialisation using your own keywords or phrases. **Add keyword/phrase** (max 2000 characters)

consulting



education



technology



&lt;&lt; Back Cancel Save and continue &gt;&gt;

- Uzmanlık Alanının üçüncü sekmesi 'Open Keywords' dür.
- Kendi uzmanlığınızı tanımlayan en az üç tane anahtar kelime veya ifade yazılır.

PROGRAMME  
selectionPERSONAL  
details

LANGUAGES

EDUCATION

AREA  
of expertisePROFESSIONAL  
experience

Welcome H GUMUS

Candidature number  
EX2014D212115

6/6 Status Valid

Programme Selection

Personal Details

Languages

Education

Area of Expertise

Professional Experience

Questions?

FAQ



contact



## Professional Experience

Please tell us about your career. We are interested in your employment history, experience in assisting the European Commission under its programmes, any other experience in peer review or evaluation as well as your publications and/or achievements.

A Employment History

B Experience in Field

C Publications &amp; Achievements

D Additional Info

Please click on the add employer button to complete your work experience and then answer the 3 questions below.

#	Job Title	Organisation	From	To		
1	Technology Transfer Office Expert	Erciyes Technopark A.S.	07/2014		<input checked="" type="checkbox"/>	<input type="checkbox"/>
2	Intern Teacher	Maryknoll High School	01/2012	06/2012	<input checked="" type="checkbox"/>	<input type="checkbox"/>
3	Intern Teacher	President William McKinley High School	09/2010	12/2011	<input checked="" type="checkbox"/>	<input type="checkbox"/>

[Add Employer](#)

How long have you worked in your specialist and/or related fields?

Less than 5 years ▾

- Profilin son sekmesi profesyonel tecrübedir. Profesyonel tecrübenin kendi altında iş geçmişi, alanda tecrübe, yayınlar & başarılar ve ek bilgi olmak üzere 4 sekmesi vardır.
- İlk sekme olan iş geçmişinde eskiden çalışılan ve hali hazırda devam eden iş bilgileri girilir. Görev, işin başlama ve bitiş tarihleri ve kurum burada yazılacak hususlardır.
- Her bir iş için 'Add Employer' butonu tıklanarak yeni kayıt oluşturulur.

Personal Details ✓  
Languages ✓  
Education ✓  
Area of Expertise ✓  
Professional Experience ✎

Questions?  
FAQ ⓘ contact ⓘ

**A** Employment History **B** Experience in Field **C** Publications & Achievements **D** Additional Info

Please click on the add employer button to complete your work experience and then answer the 3 questions below.

#	Job Title	Organisation	From	To		
1	Technology Transfer Office Expert	Erciyes Technopark A.S.	07/2014		🌐	✗
2	Intern Teacher	Maryknoll High School	01/2012	06/2012	🌐	✗
3	Intern Teacher	President William McKinley High School	09/2010	12/2011	🌐	✗

**Add Employer**

How long have you worked in your specialist and/or related fields?  
Less than 5 years ▾

Have you ever worked in the industrial sector? e.g. board member of a company, CEO, working in R&D in a company etc.  
 Yes  No

What is your current work situation?  
I am currently Employed ▾

**Save**

➔ İş geçmişinde aşağıdaki üç soru cevaplanır;

- uzman olunan alanda kaç yıl çalışıldığı

-endüstriyel bir sektörde çalışılıp çalışılmadığı.

-Hali hazırdaki çalışma statüsünün ne olduğu.

➔ 'save' butonuna tıklanarak ikinci sekmeye geçilir.



European Commission  
Participant Portal - Expert Area  
LOGOUT

European Commission > Research > Participant Portal

PROGRAMME selection  
PERSONAL details  
LANGUAGES  
EDUCATION  
AREA of expertise  
PROFESSIONAL experience

Welcome H GUMUS  
Candidature number EX2014D212115  
6/6 Status Valid

Programme Selection  
Personal Details  
Languages  
Education  
Area of Expertise  
Professional Experience

## Professional Experience

Please tell us about your career. We are interested in your employment history, experience in assisting the European Commission under its programmes, any other experience in peer review or evaluation as well as your publications and/or achievements.

A Employment History B Experience in Field C Publications & Achievements D Additional Info

Have you assisted the European Commission in tasks related to its research programme(s)?

Yes  No

Have you any other experience in peer review or evaluation?

Yes  No

Save

print profile user manual

➔ İkinci sekmede;

- Avrupa Komisyonu'nda araştırma programlarında görev alınıp alınmadığı

-Daha önce hiç, herhangi bir yayının değerlendirmesinde görev alınıp alınmadığı

soruları cevaplanır.

PROGRAMME selection ✓ PERSONAL details ✓ LANGUAGES ✓ EDUCATION ✓ AREA of expertise ✓ PROFESSIONAL experience ✎

Welcome H GUMUS

Candidature number  
EX2014D212115

6/6 Status Valid

Programme Selection ✓

Personal Details ✓



Languages ✓

Education ✓

Area of Expertise ✓

Professional Experience ✎

Questions?

FAQ  

## Professional Experience

Please tell us about your career. We are interested in your employment history, experience in assisting the European Commission under its programmes, any other experience in peer review or evaluation as well as your publications and/or achievements.

**A** Employment History **B** Experience in Field **C** Publications & Achievements **D** Additional Info

### Publications

Please present your most relevant publications (up to 30). If you don't have any, please describe your major achievement(s) below.

[Add new publication](#)

### Achievements

What are your top achievement(s) ? (e.g. patents, conference participation etc.)

Include date, country and nature of achievement. For patents, please mention the reference.

Description (max 1000 characters)

- ➔ Üçüncü sekme olan yayınlar ve başarılar da yayınların ve diğer başarıların kaydı yapılır.

- Programme Selection
- Personal Details
- Languages
- Education
- Area of Expertise
- Professional Experience

## Questions?

FAQ  contact 

Please tell us about your career. We are interested in your employment history, experience in assisting the European Commission under its programmes, any other experience in peer review or evaluation as well as your publications and/or achievements.

A Employment History B Experience in Field C Publications & Achievements D Additional Info

### Publications

Please present your most relevant publications (up to 30). If you don't have any, please describe your major achievement(s) below.

Title	<input type="text"/>
Date	Year: <input type="text"/> ▼ Month: <input type="text"/> ▼ Day: <input type="text"/> ▼
Authorship	<input type="radio"/> Author <input type="radio"/> Co-Author
Publisher/journal <i>If relevant, add page number</i>	<input type="text"/>
Which keywords best describe this publication ? <i>(max. 400 characters)</i>	<input type="text"/>
Website link (optional)	<input type="text"/>

[Back to list](#) [Save](#)

➤ 'Add new puplication' butonuna tıklandıktan sonra açılan pencerede sahip olunan yayınların başlığı, tarihi, yayınlandığı dergi ve yayını en iyi tarif eden anahtar kelimeler 400 karaktere kadar yazılır.

➤ İlk yayın kaydedildikten sonra yeni bir yayın girmek için 'Add ne puplication' butonu tıklanır ve yukarıdaki bilgiler her bir yayın için kayıt edilir.

European Commission Participant Portal - Expert Area LOGOUT

European Commission > Research > Participant Portal

PROGRAMME selection PERSONAL details LANGUAGES EDUCATION AREA of expertise PROFESSIONAL experience

Welcome H GUMUS

Candidature number EX2014D212115

6/6 Status Valid

Programme Selection ✓  
Personal Details ✓  
Languages ✓  
Education ✓  
Area of Expertise ✓  
Professional Experience

## Professional Experience

Please tell us about your career. We are interested in your employment history, experience in assisting the European Commission under its programmes, any other experience in peer review or evaluation as well as your publications and/or achievements.

**A** Employment History **B** Experience in Field **C** Publications & Achievements **D** Additional Info

Do you have an up-to-date version of your CV published on a website ? (optional)

http://www.

Is there anything you would like to add ? (optional)

(max 10000 characters)

Characters remaining: 10000

Save

- Profesyonel tecrübenin son sekmesinde ek bilgi arzu edilirse kayıt edilir. CV herhangi bir web sitesinde kayıtlı ise o web sitesinin CVyi içeren linki yazılır.
- Ayrıca eklenecek olan bir bilgi varsa 1000 karaktere kadar yazılabilir.
- Son olarak 'save' butonuna tıklanığında profil tamamlanmış olur.

- ➔ Profil kaydı tamamlandığında ekranda kaydın başarıyla tamamlandığına dair bir mesaj görünür.
- ➔ Ayrıca aynı mesaj email adresine de gönderilir.

European Commission > Research & Innovation > Participant Portal > Experts

MY AREA HOME FUNDING OPPORTUNITIES HOW TO PARTICIPATE EXPERTS SUPPORT Search PP HULYA GUMUS

My Organisation(s)  
My Proposal(s)  
My Project(s)  
My Notification(s)  
**My Expert Area**

Welcome to the Expert area in the Participant Portal.

New employer or qualification to add? Change in contact details?  
It is important to keep your profile up-to-date!

News

H2020 call for expression for interest for experts (11/2013)  
New calls for expression of interest for individual experts and for organisations to suggest experts were just published in OJ C342 of 22 November 2013. European Commission will soon need experts to evaluate first Horizon 2020 proposals. Don't forget to tick the H2020 box in the registration platform and update your expertise.

Quick Links

- FAQ for Experts
- EMEX
- Expert recommendations
- Guidance on the evaluation of

Profile Contracts

Profile Data

- Your programmes preferences are:**
  - ✓ Horizon 2020 – the Framework Programme for Research and Innovation Education, Audio-Visual and Culture Executive Agency programmes
  - ✓ COSME (Competitiveness for Small and Medium-sized Enterprises) programme
    - CEF (Connecting Europe Facility)
    - Other European Commission funding programmes
- Your profile accessibility preferences are:**
  - ✓ European Commission and its Executive Agencies/bodies
  - ✓ Public research funding bodies in Member States and Associated Countries
  - ✓ Joint Technology Initiatives and joint research programmes

Your profile is VALID

Last Modified on:  
05-Sep-2014

Your expert Id::  
EX2014D212115

**EDIT PROFILE**

- Profilde herhangi bir dönemde 'edit profile' butonuna tıklanarak düzeltme yapılabilir.

# TEŞEKKÜRLER

Hülya GÜMÜŞ

- Email: [hulyagumus@erciyesteknopark.com](mailto:hulyagumus@erciyesteknopark.com)
- Tel: 0352 224 8112 /140